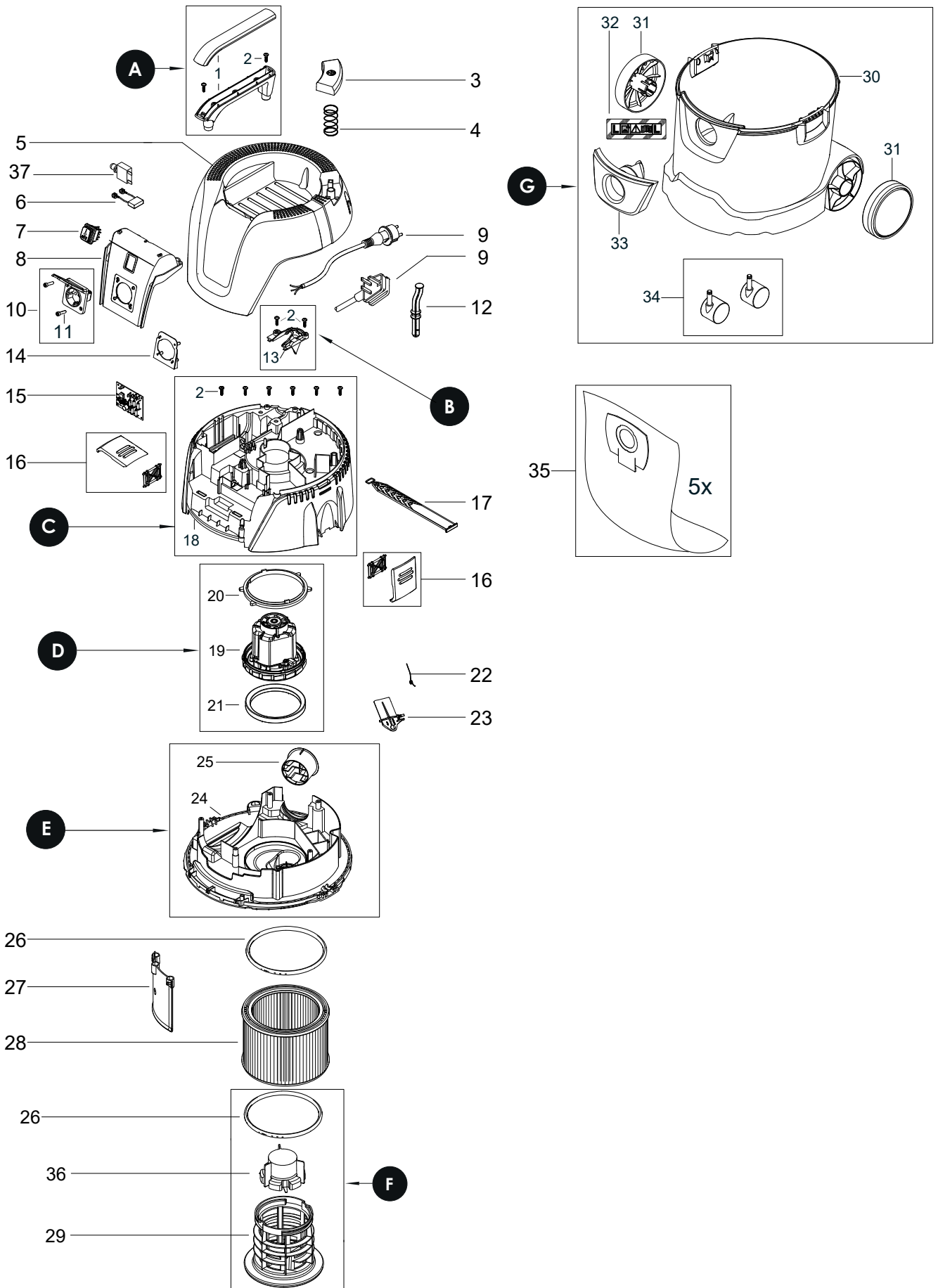


Exploded view of Dust Extractor 1025 L 230V
 Updated 1.9.2023



Dust Extractor 1025 L 230V Spare Part kits

Electrical tool must be serviced by a qualified repair person and in accordance with national requirements.

Note! Repairs done by non-authorized repairer will breach the Mirka warranty.

Mirka Code	Item	Description	Kit	QTY	Comment
8999001111		Handle kit			
	1	Handle	A	1	
	2	Screw 5 x 18 mm		2	
8999001311		Power Cord Outlet kit			
	2	Screw 5 x 18 mm	B	2	
	13	Outlet for Power Cord		1	
8999001811		Clamping Plate kit			
	2	Screw 5 x 18 mm	C	6	
	18	Clamping Plate		1	
8999001911		Motor Assembly (230V)			
	19	Motor	D	1	
	20	Upper Motor Sealing		1	
	21	Lower Motor Sealing		1	
8999002411		Base Plate kit			
	24	Base Plate	E	1	
	25	Outlet Fitting		1	
8999602511		Filter Support Cage kit			
	26	Sealing	F	1	
	29	Filter Support Cage		1	
	36	Floater		1	
8999003011		Container kit			
	30	Container	G	1	
	31	Wheel 130 mm		2	
	32	Label Dust Class L		1	
	33	Inlet Fitting		1	
	34	Wheel 50mm		2	

Separate spare parts on next page.

Dust Extractor 1025 L 230V Spare Parts

Mirka Code	Item	Description	Kit	QTY	Comment
	1	Handle	A	1	
8999701411	2	Screw 5 x 18 mm	A,B,C	10	
8999000311	3	PC Button		1	
8999112511	4	Spring to Button		1	
8999000511	5	Cover		1	
8999000611	6	Anti-Interference Capacitor Set		1	
8999000711	7	Switch		1	
8999000811	8	Switch and Socket Board		1	
8999711111	9	Power Cord (EU)		1	
8999711211	9	Power Cord (GB) 230V		1	
8999041411	9	Power Cord (ANZ)		1	
8999241711	9	Power Cord (CN)		1	
8999601911	10	Socket (EU) 16A/250V		1	
8999711011GB	10	Socket (GB) 13A/250V		1	
8999211111	10	Socket (ANZ) 10A/250V		1	
8999212811	10	Socket (CN) 10A/250V		1	
8999701311	11	Screw 3.5x18 mm		2	
8999001211	12	Rod for Push & Clean		1	
	13	Outlet for Power Cord	B	1	
8999001411	14	Plug Socket Plate		1	
8999001511	15	Electronic Board 230-240 V		1	
8999001611	16	Container Clamp		1	
8999001711	17	Rubber Strap		1	
	18	Clamping Plate	C	1	
	19	Motor (230V)	D	1	
	20	Upper Motor Sealing	D	1	
	21	Lower Motor Sealing	D	1	
8999602211	22	Torsion Spring		1	
8999002311	23	Flap		1	
	24	Base Plate	E	1	
	25	Outlet Fitting	E	1	
8999002611	26	Sealing	F	1	
8999002711	27	Deflector Shield		1	
8999600411	28	Filter		1	
	29	Filter Support Cage	F	1	
	30	Container	G	1	
8999003111	31	Wheel 130 mm	G	2	
	32	Label Dust Class L	G	1	
	33	Inlet Fitting	G	1	
8999003411	34	Wheel 50 mm 2/Pack	G	2	
8999000211	35	Dust Bag Fleece 5/Pack		1	
	36	Floater	F	1	
8999213011	37	Resettable Fuse 5A (ANZ)		1	Optional